

# 硬质合金型材

CEMENTED CARBIDE RODS & BARS

Meticulously Make  
精心制造

Advanced Equipment  
先进设备

多项专利  
Multiple Patents

厂家直销  
Direct Deal

Nanchang Bestway Cemented Carbide Co., Ltd

Address: No.418 Industrial 1st Road, Xiaolan  
Industrial Zone, Nanchang, Jiangxi, China

TEL: 86-791-86567001

FAX: 86-791-86568905

Email: enquiry@bwcarbide.com

南昌佰利鑫合金工具有限公司  
NANCHANG BESTWAY CEMENTED CARBIDE CO.,LTD.





## 公司简介

### ABOUT US

南昌佰利鑫合金工具有限公司，创建于2009年，是一家专业的硬质合金制造商和供应商。我司生产的高性能标准产品和特殊订制产品，可充分满足全球客户在金属加工、木材加工、采矿、建筑工程、石油和天然气、模具等行业的多种应用需求。

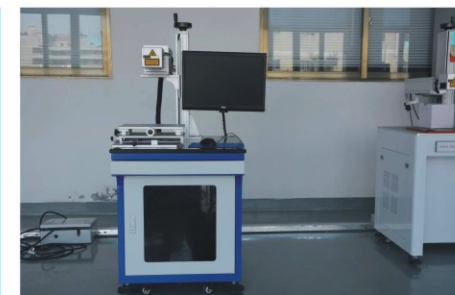
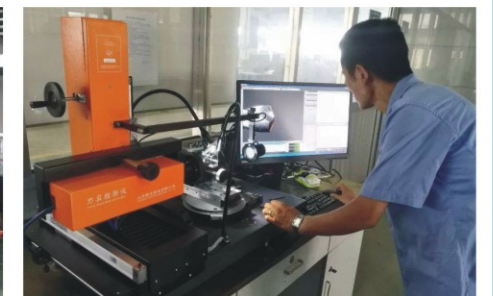
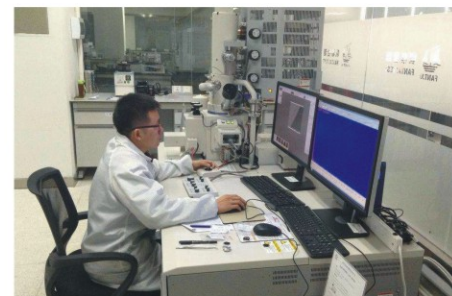
通过构建全面的品质管理系统，严格控制原材料供应链，保持生产工序的100%可追溯性，确保交付给客户品质如一的高性能产品。

佰利鑫坚持负责任和可持续的商业行为，包括无冲突的原材料采购，积极的员工健康管理，以及对环境影响的持续关注。开放透明的经营理念让我们的客户，员工和外部供应商对我们的业务和产品充满信心。

Nanchang Bestway Cemented Carbide Co., Ltd., established in 2009, is a professional manufacturer and exporter of high performance tungsten carbide products. Bestway delivers globally a high performance standard and special products offering, that meet the most challenging demands from industry sectors, including metalworking, woodworking, mining, construction, oil & gas, and die & mould.

Bestway High performance products are guaranteed by a strong process management system, resulting in consistent quality for every batch and product. Strict control of our raw material supply chains and 100% traceability for every product batch throughout the entire manufacturing process. A philosophy of continuous improvements within every process is a core principle in our ways of working.

Bestway Adheres to responsible and sustainable business practices, including conflict free raw material sourcing, proactive health management for your employees, and continuous concern about the environmental impacts of our business. Our open and transparent business philosophy allows our customers, employees and external suppliers, to have confidence in our business, ways of working and our products.



## 企业荣誉

ENTERPRISE HONOR



### 企业文化:

诚信、踏实、优质、一流!

### 公司宗旨:

以人为本，诚信务实，创新进取，回报社会。信誉至上，用户第一，质量满意，交货准时，愿与您真诚合作、携手发展。

### 愿景:

公司拥有较强实力的技术研发中心，技术创新中心，同时，我们大力引进系统，现代，数字化的生产检测设备，不断在生产技术方面求变求新，大胆改革，使产品质量与企业效益紧密结合。

### Corporate culture:

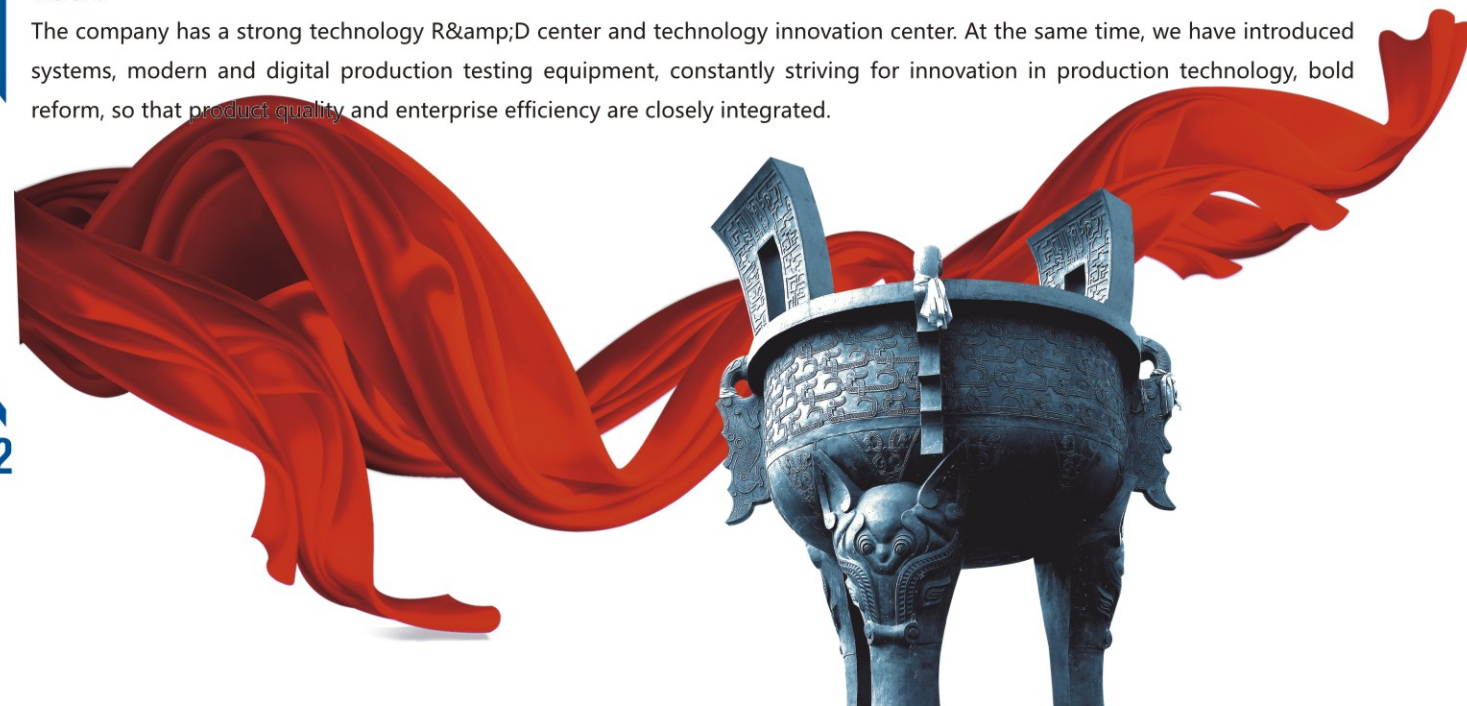
Honesty, steadfastness, high quality, first-class!

### Company purpose:

People-oriented, honest and pragmatic, innovative and enterprising, return to society. Credit first, users first, quality satisfaction, punctual delivery, willing to cooperate with you sincerely and develop hand in hand.

### Vision:

The company has a strong technology R&D center and technology innovation center. At the same time, we have introduced systems, modern and digital production testing equipment, constantly striving for innovation in production technology, bold reform, so that product quality and enterprise efficiency are closely integrated.





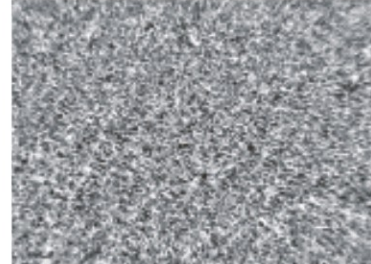
## 硬质合金棒材牌号、性能及推荐用途

GRADE, PROPERTIES AND RECOMMENDED USES OF CEMENTED CARBIDE RODS

牌号 Grade	钴含量 Co(%)	密度 Density (g/cm <sup>3</sup> )	抗弯强度 TRS(Mpa)	硬度 Hardness (HRA)±0.5	晶粒度 WC(μm)	推荐度 Applications Recommended
SK10A	6	14.5-14.7	≥3500	94	0.4	适用于粉末冶金加工。可制成PCB。 Suitable for powder metallurgy processing. Can be made into PCB.
SK20A	8	14.4-14.6	≥3600	93.3	0.5	适用于硬端铣精铣，加工纤维、木材、塑料、黄铜、铝合金等，可制作PCB微钻，雕刻刀。 Suitable for hard end milling, processing fiber, wood, plastic, brass, aluminum alloy, etc.
SK35A	10	14.4-14.55	≥3800	91.2	1.0	普通端铣，粗铣。适用于HRC30-45材料加工。 Common end milling, rough milling. Suitable for HRC30-45 hardness Material processing.
SK10	6	14.7-14.9	≥2500	92.5	1.0	适用于加工铝，钢及石墨制品 Suitable for processing aluminum, steel and graphite products
SK20	0	13.8-14.4	≥3000	89.5	1.0	适用于无磷材料，耐腐蚀材料 Suitable for non-phosphorus materials, corrosion resistant materials
SK30	10	13.8-14.2	≥3000	90.5	1.0	推荐用于麻花钻，立铣刀等通用工具材料 Recommended for twist drills, endmills and other general tool materials
SK35	10	14.2-14.6	≥3600	91.8	0.7	推荐用于麻花钻，立铣刀等通用工具材料 Recommended for twist drills, endmills and other general tool materials
XL2T	12	14.2-14.6	≥3200	91.5	0.6	推荐用于麻花钻，立铣刀等通用工具材料 Recommended for twist drills, endmills and other general tool materials
SK45	12	14.0-14.3	≥4000	92	0.4	推荐用于麻花钻，立铣刀等硬质合金工具材料 Recommended for twist drills, endmills and other carbide tool materials
SK50	15	13.8-14.1	≥2020	87.5	1.0	适用于坚硬岩层凿岩 Suitable for hard rock drilling

# 牌号推荐与应用

GRADE RECOMMENDATION AND APPLICATION

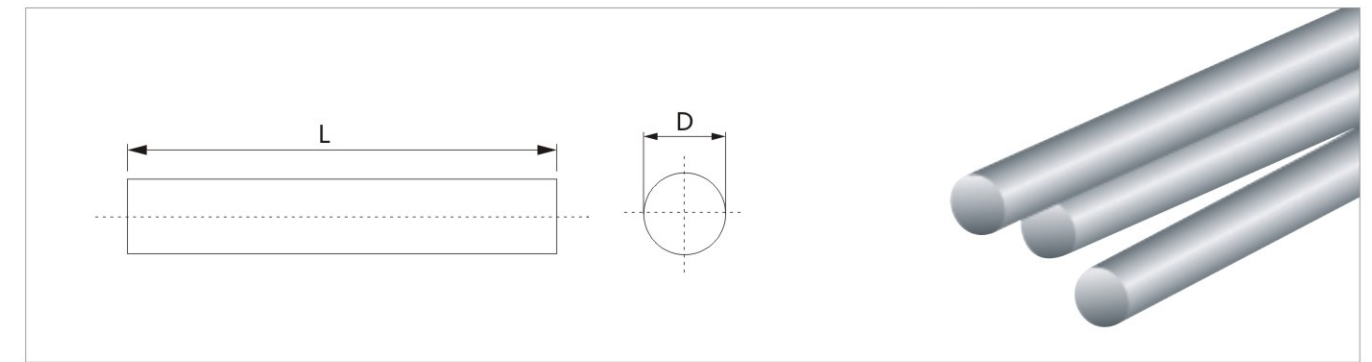
SK45		SK35		SK10	
<b>化学成分(%)</b> Chemical Composition		<b>化学成分(%)</b> Chemical Composition		<b>化学成分(%)</b> Chemical Composition	
WC and others	88	WC and others	90	WC and others	94
Co	12	Co	10	Co	6
<b>物理性质</b> Physical Property		<b>物理性质</b> Physical Property		<b>物理性质</b> Physical Property	
硬度 Hardness (HRA)	92.8	硬度 Hardness (HRA)	91.8	硬度 Hardness (HRA)	92.5
密度 Density (g/cm <sup>3</sup> )	14.10	密度 Density (g/cm <sup>3</sup> )	14.40	密度 Density (g/cm <sup>3</sup> )	14.90
抗弯强度 Bending Strength (N/mm <sup>2</sup> )	4200	抗弯强度 Bending Strength (N/mm <sup>2</sup> )	3500	抗弯强度 Bending Strength (N/mm <sup>2</sup> )	2500
晶粒度 Grain Size	0.4	晶粒度 Grain Size	0.7	晶粒度 Grain Size	1.0
<b>推荐用途</b> Application Recommend		<b>推荐用途</b> Application Recommend		<b>推荐用途</b> Application Recommend	
推荐用于制作各种规格立铣刀、铰刀、雕刻刀等。在高速轻切削上具有卓越的性能适用于加工、淬硬钢、铝合金等。 Recommended for making various specifications of endmills,reamers, carving knives, etc. With excellent performance in high speed light cutting, suitable for machining hardened steel, aluminum alloy,etc.		推荐用于制作通用加工用钻头，立铣刀。适用于普通模具钢、铸铁、奥氏体不锈钢和耐热合金的铣削加工和孔加工。 Recommended for making all kinds of drills and endmills. Suitable for milling and hole machining of ordinary die steel, cast iron austenitic stainless steel and heat resistant alloy.		推荐用于制作各种规格钻头、立铣刀、旋转锉刀等。适用于有色金属加工如铝、钢及石墨制品(需涂层)。 Recommended to manufacture various specifications of drills, endmills and rotary burs. Suitable for non-ferrous metal processing such as aluminum, steel and graphite products (coating required).	
<b>金相</b> metallographic phase		<b>金相</b> metallographic phase		<b>金相</b> metallographic phase	
					

可按客户要求定制规格生产  
Can be customized according to the customer's requirements

# 实心硬质合金棒材毛坯

SOLID CEMENTED CARBIDE ROD BLANK

型号表示：φDxL



注：编号 Re: Item# SK45 A 082 330  
Length 长度330mm  
Diameter 直径8mm  
Solid carbide Rod 实芯圆棒  
Grade 牌号 SK45

直径 (mm) Diameter	公差 (mm) Tolerance	H6 (mm)	长度 (mm) Length	公差 (mm) Tolerance	编号 Item No.
1.2	0~+0.2	-	330	0~+1.5	SK**A012330
1.7	0~+0.2	-	330	0~+1.5	SK**A017330
2.2	0~+0.2	20	330	0~+1.5	SK**A022330
2.7	0~+0.2	-	330	0~+1.5	SK**A027330
3.2	0~+0.2	30	330	0~+1.5	SK**A032330
3.7	0~+0.2	-	330	0~+1.5	SK**A037330
4.2	0~+0.2	40	330	0~+1.5	SK**A042330
4.7	0~+0.2	-	330	0~+1.5	SK**A047330
5.2	0~+0.2	50	330	0~+1.5	SK**A052330
5.7	0~+0.2	-	330	0~+1.5	SK**A057330
6.2	0~+0.2	6.0	330	0~+1.5	SK**A062330
6.7	0~+0.2	-	330	0~+1.5	SK**A067330
7.2	0~+0.2	7.0	330	0~+1.5	SK**A072330
7.7	0~+0.3	-	330	0~+1.5	SK**A077330
8.2	0~+0.3	8.0	330	0~+1.5	SK**A082330
8.7	0~+0.3	-	330	0~+1.5	SK**A087330
9.2	0~+0.3	9.0	330	0~+1.5	SK**A092330
9.7	0~+0.3	-	330	0~+1.5	SK**A097330

可按客户要求定制规格生产  
Can be customized according to the customer's requirements

## 圆棒系列—实芯圆棒

CARBIDE ROD SERIES-SOLID ROD

外径 (mm) Diameter	公差 (mm) Tolerance	H6 (mm)	长度 (mm) Length	公差 (mm) Tolerance	编号 Item No.
10.2	0~+0.3	10.0	330	0~+1.5	SK**A102330
10.7	0~+0.3	-	330	0~+1.5	SK**A107330
11.2	0~+0.3	11.0	330	0~+1.5	SK**A112330
11.7	0~+0.3	-	330	0~+1.5	SK**A117330
12.2	0~+0.3	12.0	330	0~+1.5	SK**A122330
12.7	0~+0.3	-	330	0~+1.5	SK**A127330
13.2	0~+0.3	13.0	330	0~+1.5	SK**A132330
13.7	0~+0.3	-	330	0~+1.5	SK**A137330
14.2	0~+0.3	14.0	330	0~+1.5	SK**A142330
14.7	0~+0.3	-	330	0~+1.5	SK**A147330
15.2	0~+0.3	15.0	330	0~+1.5	SK**A152330
15.7	0~+0.3	-	330	0~+1.5	SK**A157330
16.2	0~+0.4	16.0	330	0~+1.5	SK**A162330
16.7	0~+0.4	-	330	0~+1.5	SK**A167330
17.2	0~+0.4	17.0	330	0~+1.5	SK**A172330
17.7	0~+0.4	-	330	0~+1.5	SK**A177330
18.2	0~+0.4	18.0	330	0~+1.5	SK**A182330
18.7	0~+0.4	-	330	0~+1.5	SK**A187330
19.2	0~+0.4	19.0	330	0~+1.5	SK**A192330
19.7	0~+0.4	-	330	0~+1.5	SK**A197330
20.2	0~+0.5	20.0	330	0~+1.5	SK**A202330
20.7	0~+0.5	-	330	0~+1.5	SK**A207330
21.2	0~+0.5	21.0	330	0~+1.5	SK**A212330
21.7	0~+0.5	-	330	0~+1.5	SK**A217330

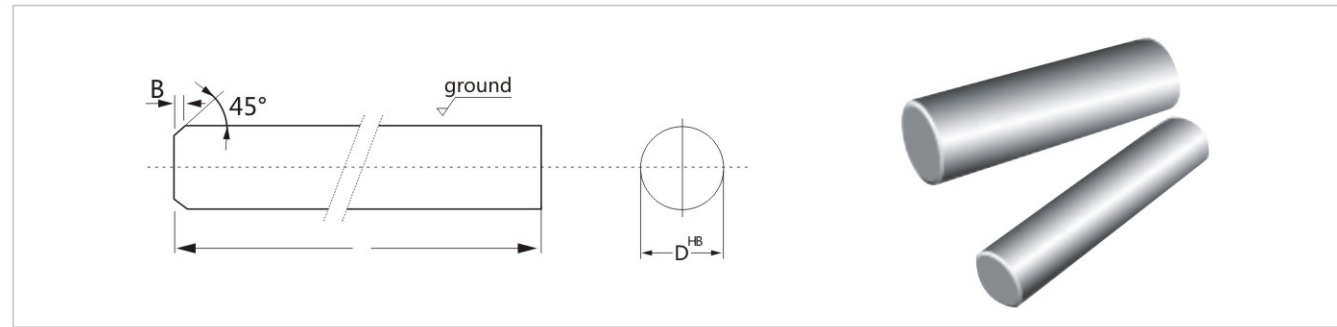
## 圆棒系列—实芯圆棒

CARBIDE ROD SERIES-SOLID ROD

外径 (mm) Diameter	公差 (mm) Tolerance	H6 (mm)	长度 (mm) Length	公差 (mm) Tolerance	编号 Item No.
22.2	0~+0.5	22.0	330	0~+1.5	SK**A222330
22.7	0~+0.5	-	330	0~+1.5	SK**A227330
23.2	0~+0.5	23.0	330	0~+1.5	SK**A232330
23.7	0~+0.5	-	330	0~+1.5	SK**A237330
24.2	0~+0.5	24.0	330	0~+1.5	SK**A242330
24.7	0~+0.5	-	330	0~+1.5	SK**A247330
25.2	0~+0.5	25.0	330	0~+1.5	SK**A252330
26.2	0~+0.5	26.0	330	0~+1.5	SK**A262330
27.2	0~+0.5	27.0	330	0~+1.5	SK**A272330
28.2	0~+0.5	28.0	330	0~+1.5	SK**A282330
29.2	0~+0.5	29.0	330	0~+1.5	SK**A292330
30.2	0~+0.5	30.0	330	0~+1.5	SK**A302330
31.2	0~+0.5	31.0	330	0~+1.5	SK**A312330
32.2	0~+0.5	32.0	330	0~+1.5	SK**A322330
33.2	0~+0.5	33.0	330	0~+1.5	SK**A332330
34.2	0~+0.5	34.0	330	0~+1.5	SK**A342330
35.2	0~+0.5	35.0	330	0~+1.5	SK**A352330
36.2	0~+0.7	36.0	330	0~+1.5	SK**A362330
37.2	0~+0.7	37.0	330	0~+1.5	SK**A372330
38.2	0~+0.7	38.0	330	0~+1.5	SK**A382330
39.2	0~+0.7	39.0	330	0~+1.5	SK**A392330
40.2	0~+0.7	40.0	330	0~+1.5	SK**A402330
41.2	0~+0.7	41.0	330	0~+1.5	SK**A412330
42.2	0~+0.7	42.0	330	0~+1.5	SK**A422330

# 圆棒系列—实芯圆棒

CARBIDE ROD SERIES-SOLID ROD



直径 Diameter		长度 Length		倒角 Chamfer		长度公差代码 Tol.code of length
D inch	D mm	L inch	L mm	B inch	B mm	code
1/8	3.175	1 1/2	38.1	0.015	0.381	S
1/8	3.175	2	50.8	0.015	0.381	S
1/8	3.175	3	76.2	0.015	0.381	T
3/16	4.763	1 1/2	38.1	0.015	0.381	S
3/16	4.763	2	50.8	0.015	0.381	S
3/16	4.763	2 1/2	63.5	0.015	0.381	U
3/16	4.763	3	76.2	0.015	0.381	T
1/4	6.350	1 1/2	38.1	0.025	0.635	S
1/4	6.350	2	50.8	0.025	0.635	S
1/4	6.350	2 1/2	63.5	0.025	0.635	U
1/4	6.350	3	76.2	0.025	0.635	T
1/4	6.350	3 1/4	82.6	0.025	0.635	T
1/4	6.350	3 1/2	88.9	0.025	0.635	T
1/4	6.350	4	101.6	0.025	0.635	T
5/16	7.938	2	50.8	0.025	0.635	S
5/16	7.938	2 1/2	63.5	0.025	0.635	U
5/16	7.938	3	76.2	0.025	0.635	T
5/16	7.938	3 1/2	88.9	0.025	0.635	T
5/16	7.938	4	101.6	0.025	0.635	T
3/8	9.525	2	50.8	0.030	0.762	S
3/8	9.525	2 1/2	63.5	0.030	0.762	U
3/8	9.525	3	76.2	0.030	0.762	T
3/8	9.525	3 1/4	82.6	0.030	0.762	T
3/8	9.525	3 1/2	88.9	0.030	0.762	T
3/8	9.525	4	101.6	0.030	0.762	T
3/8	9.525	6	152.4	0.030	0.762	T

可按客户要求定制规格生产  
Can be customized according to the customer's requirements

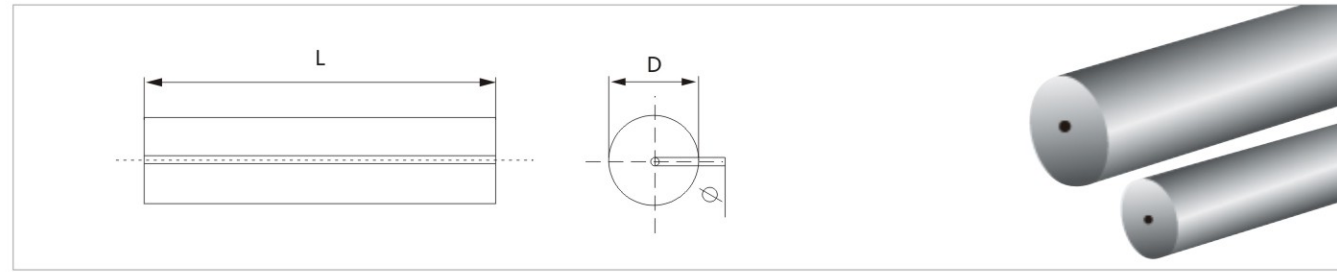
直径 Diameter		长度 Length		倒角 Chamfer		长度公差代码 Tol.code of length
D inch	D mm	L inch	L mm	B inch	B mm	code
7/16	11.113	2 1/2	63.5	0.030	-	U
7/16	11.113	2 1/4	69.9	0.030	0.762	U
7/16	11.113	4	101.6	0.030	0.762	T
7/16	11.113	4 1/2	114.3	0.030	0.762	T
7/16	11.113	5	127.0	0.030	0.762	T
1/2	12.700	2 1/2	63.5	0.030	0.762	U
1/2	12.700	3	76.2	0.030	0.762	T
1/2	12.700	3 1/8	79.4	0.030	0.762	T
1/2	12.700	4	101.6	0.030	0.762	T
1/2	12.700	4 1/2	114.3	0.030	0.762	T
1/2	12.700	5	127	0.030	0.762	T
1/2	12.700	6	152.4	0.030	0.762	T
9/16	14.288	3	76.2	0.030	0.762	T
9/16	14.288	3 1/2	88.9	0.030	0.762	T
5/8	15.875	3	76.2	0.030	0.762	T
5/8	15.875	3 1/2	88.9	0.030	0.762	T
5/8	15.875	3 1/4	95.3	0.030	0.762	T
5/8	15.875	4 1/8	104.8	0.030	0.762	T
5/8	15.875	5	127	0.030	0.762	T
5/8	15.875	8	203.2	0.030	0.762	T
3/4	19.050	3	76.2	0.040	1.016	T
3/4	19.050	3 1/2	88.9	0.040	1.016	T
3/4	19.050	4	101.6	0.040	1.016	T
3/4	19.050	4 1/2	114.3	0.040	1.016	T
3/4	19.050	5	127	0.040	1.016	T
3/4	19.050	6	152.4	0.040	1.016	T
3/4	19.050	6 1/2	165.1	0.040	1.016	T
7/8	22.225	4	101.6	0.040	1.016	T
1	25.400	3	76.2	0.040	1.016	T
1	25.400	3 1/2	88.9	0.040	1.016	T
1	25.400	4	101.6	0.040	1.016	T
1	25.400	5	127	0.040	1.016	T
1	25.400	6	152.4	0.040	1.016	T
1	25.400	7	177.8	0.040	1.016	T
1 1/4	31.750	4 1/2	114.3	0.040	1.016	T
1 1/4	31.750	6	152.4	0.040	1.016	T
1 1/4	31.750	7 1/2	190.5	0.040	1.016	T

Inch size 英制标准  
Diameter tol. 直径公差h6  
One side chamfer 一端带倒角Bx45°  
Tol.code of 长度公差 S 0/+0.762mm  
Length 及代码 U 0/+1.16mm  
T 0/+1.270mm  
Length: S 0/+0.030 inch  
U 0/+0.040 inch  
T 0/+0.05 inch

可按客户要求定制规格生产  
Can be customized according to the customer's requirements

## 圆棒系列—单直孔圆棒

CARBIDE ROD SERIES - SINGLE STRAIGHT HOLE ROD



注：编号 Re: Item# SK45 A 082 12 330  
 length 长度330mm  
 ID 内径1.0mm  
 OD 外径8mm  
 Single straight hole 单直孔  
 Grade 牌号 SK45

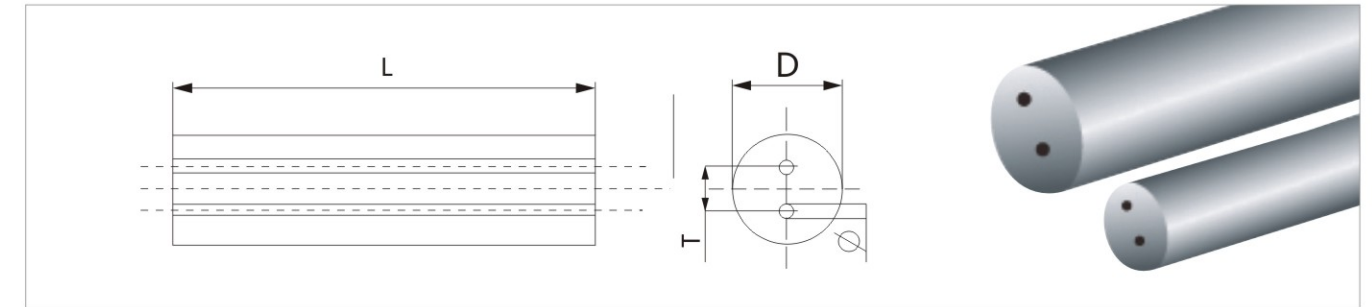
直径D (mm) Diameter	公差 (mm) Tolerance	外径φ (mm)	长度L (mm) Length	公差 (mm) Tolerance	编号 Item No.
2.2	0~+0.2	φ0.2±0.06 ~ φ9.7±0.3	330	0~+1.5	SK**B022**330
3.2	0~+0.2		330	0~+1.5	SK**B032**330
4.2	0~+0.2		330	0~+1.5	SK**B042**330
5.2	0~+0.2		330	0~+1.5	SK**B052**330
6.2	0~+0.2		330	0~+1.5	SK**B062**330
7.2	0~+0.2		330	0~+1.5	SK**B072**330
8.2	0~+0.3		330	0~+1.5	SK**B082**330
9.2	0~+0.3		330	0~+1.5	SK**B092**330
10.2	0~+0.3		330	0~+1.5	SK**B102**330
11.2	0~+0.3		330	0~+1.5	SK**B112**330
12.2	0~+0.3		330	0~+1.5	SK**B122**330
13.2	0~+0.3		330	0~+1.5	SK**B132**330
14.2	0~+0.3		330	0~+1.5	SK**B142**330
15.2	0~+0.3		330	0~+1.5	SK**B152**330
16.2	0~+0.4		330	0~+1.5	SK**B162**330
17.2	0~+0.4		330	0~+1.5	SK**B172**330
18.2	0~+0.4		330	0~+1.5	SK**B182**330
19.2	0~+0.4		330	0~+1.5	SK**B192**330
20.2	0~+0.5		330	0~+1.5	SK**B202**330
21.2	0~+0.5		330	0~+1.5	SK**B212**330

可按客户要求定制规格生产  
 Can be customized according to the customer's requirements

## 双直孔硬质合金棒材

DUAL STRAIGHT HOLE CEMENTED CARBIDE ROD

型号表示：φD×2φdxTKφxL2 (L表示长度，2表示双直孔)  
 (L: length, 2: Dual straight holes)

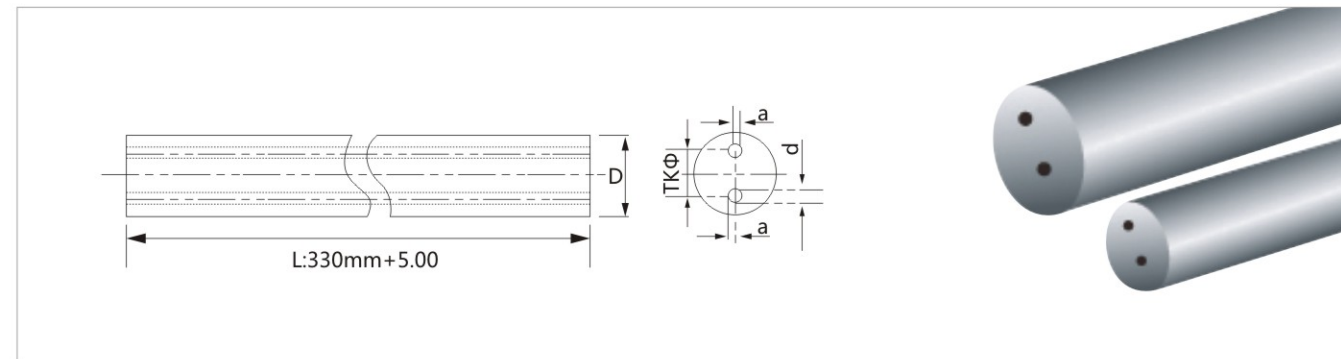


直径 (mm) Diameter	外径公差 (mm) Dia.Tol.	孔公差 (mm) HoleTol.	同心差 Hole distance	长度 (mm) Length	公差 (mm) Tolerance
φ4.2	+0.3-0	±0.1	1.8	330	-0+5.0
φ5.2		±0.1	2.0	330	-0+5.0
φ6.3		±0.1	3.0	330	-0+5.0
φ7.3		±0.15	3.5	330	-0+5.0
φ8.3		±0.15	4.0	330	-0+5.0
φ9.3		±0.15	4.0	330	-0+5.0
φ10.3	+0.4-0	±0.15	5.0	330	-0+5.0
φ11.3		±0.15	5.0	330	-0+5.0
φ12.3		±0.15	6.0	330	-0+5.0
φ13.3		±0.15	6.0	330	-0+5.0
φ14.3		±0.15	7.0	330	-0+5.0
φ15.3		±0.2	7.0	330	-0+5.0
φ16.3	+0.5-0	±0.2	8.0	330	-0+5.0
φ17.3		±0.2	8.0	330	-0+5.0
φ18.3		±0.2	9.0	330	-0+5.0
φ19.3		±0.2	9.0	330	-0+5.0
φ20.4		±0.25	10.0	330	-0+5.0
φ21.4		±0.25	10.0	330	-0+5.0
φ22.4		±0.25	11.0	330	-0+5.0
φ23.4		±0.25	11.0	330	-0+5.0
φ24.4		±0.25	12.0	330	-0+5.0
φ25.4		±0.25	12.0	330	-0+5.0
φ26.4	±0.25	13.0	330	-0+5.0	
φ28.4	±0.25	14.0	330	-0+5.0	
φ30.4	±0.25	14.0	330	-0+5.0	

可按客户要求定制规格生产  
 Can be customized according to the customer's requirements

## 毛坯棒材——双冷却孔（缩孔）

UNGROUND CARBIDE ROD DUAL COOLANT HOLE (SHRINKAGE HOLE)

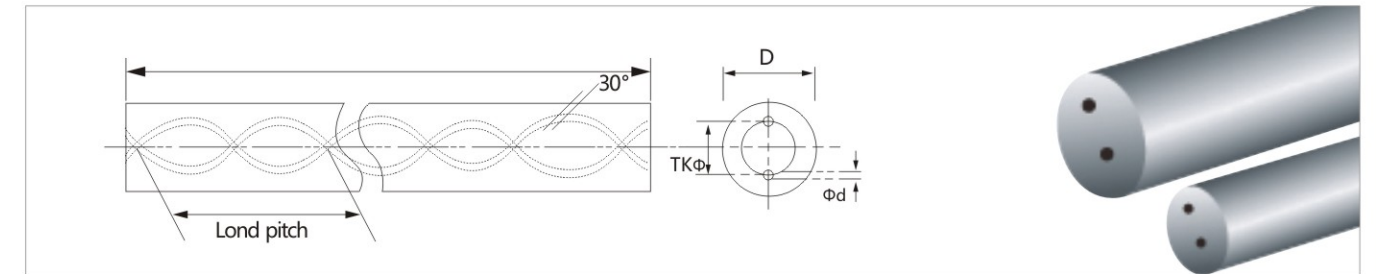


规格 Spec.	尺寸 Size							牌号 Grade	
	直径φ Dia. (mm)	公差 Tol. (mm)	内冷却孔 Hole dia. φ(mm)	公差 Tol. (mm)	孔间距 Hole distance φ(mm)	公差 Tol. (mm)	孔中心 偏离	Gu20	GU25UF
BLX1060330S	6.0	+0.30~+0.50	0.80	±0.10	1.50	-0.20	0.15	⊙	○
BLX1070330S	7.0	+0.30~+0.60	0.80	±0.10	1.50	-0.20	0.15	⊙	○
BLX1080330S	8.0	+0.30~+0.60	1.00	±0.10	1.50	-0.30	0.15	⊙	○
BLX1090330S	9.0	+0.30~+0.60	1.00	±0.10	2.60	-0.30	0.20	⊙	○
BLX1100330S	10.0	+0.30~+0.60	1.00	±0.10	2.60	-0.30	0.20	⊙	○
BLX1110330S	11.0	+0.30~+0.60	1.20	±0.15	3.60	-0.30	0.28	⊙	○
BLX1120330S	12.0	+0.30~+0.60	1.20	±0.15	3.60	-0.30	0.30	⊙	○
BLX1130330S	13.0	+0.30~+0.70	1.20	±0.15	3.60	-0.30	0.34	⊙	○
BLX1140330S	14.0	+0.30~+0.70	1.50	±0.15	5.00	-0.30	0.37	⊙	○
BLX1150330S	15.0	+0.30~+0.70	1.50	±0.15	5.00	-0.30	0.40	⊙	○
BLX1160330S	16.0	+0.30~+0.70	1.50	±0.15	5.00	-0.30	0.40	⊙	○
BLX1170330S	17.0	+0.30~+0.80	2.00	±0.20	6.20	-0.30	0.47	⊙	○
BLX1180330S	18.0	+0.30~+0.80	2.00	±0.20	6.20	-0.30	0.50	⊙	○
BLX1190330S	19.0	+0.30~+0.80	2.00	±0.20	6.20	-0.30	0.50	⊙	○
BLX1200330S	20.0	+0.30~+0.80	2.00	±0.25	6.20	-0.40	0.50	⊙	○
BLX1210330S	21.0	+0.30~+0.80	2.00	±0.25	6.20	-0.40	0.50	⊙	○
BLX1220330S	22.0	+0.30~+0.80	2.00	±0.25	6.20	-0.40	0.50	⊙	○
BLX1230330S	23.0	+0.30~+0.80	2.00	±0.25	7.50	-0.40	0.50	⊙	○
BLX1240330S	24.0	+0.30~+0.80	2.00	±0.25	7.50	-0.50	0.50	⊙	○
BLX1250330S	25.0	+0.30~+0.80	2.00	±0.25	7.50	-0.50	0.50	⊙	○
BLX1260330S	26.0	+0.30~+0.80	2.00	±0.25	7.50	-0.50	0.50	⊙	○

## 毛坯棒材——带螺旋孔

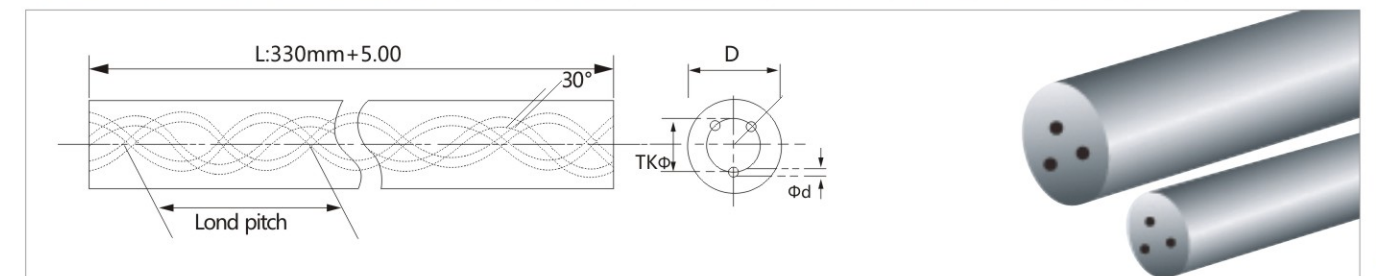
UNGROUND CARBIDE ROD WITH HELICAL HOLE

### 毛坯棒材—30°双螺旋孔 UNGROUND CARBIDE ROD WITH HELICAL HOLE 30 DEGREE



规格 Spec.	尺寸 Size								牌号 Grade	
	直径 Diameter		孔径 Hole dia		孔间距 Hole distance		螺距 Pitch		孔中心 偏离 a	GU20
	φD(mm)	Tol. (mm)	φD(mm)	Tol. (mm)	TKφ(mm)	Tol. (mm)	Pitch. (mm)	Tol. (mm)		
BLX31060330	6.0	+0.60~+1.00	0.70	±0.10	2.60	-0.40	32.70	±0.85	0.15	○
BLX31070330	7.0	+0.70~+1.10	1.00	±0.15	3.70	-0.40	38.09	±0.95	0.15	○
BLX31080330	8.0	+0.70~+1.10	1.00	±0.15	4.00	-0.40	43.53	±1.05	0.15	○
BLX31090330	9.0	+0.70~+1.10	1.40	±0.15	4.80	-0.60	48.97	±1.15	0.20	○
BLX31100330	10.0	+0.70~+1.10	1.40	±0.15	4.80	-0.60	54.41	±1.25	0.20	○
BLX31110330	11.0	+0.70~+1.10	1.40	±0.15	5.30	-0.80	59.86	±1.20	0.30	○
BLX31120330	12.0	+0.70~+1.10	1.40	±0.15	6.25	-0.80	65.30	±1.45	0.30	○
BLX31130330	13.0	+0.70~+1.10	1.75	±0.20	6.50	-0.80	70.74	±1.55	0.37	○
BLX31140330	14.0	+0.70~+1.10	1.75	±0.20	7.10	-0.80	76.18	±1.65	0.40	○
BLX31150330	15.0	+0.70~+1.10	1.75	±0.20	7.70	-0.80	81.62	±1.75	0.40	○
BLX31160330	16.0	+0.70~+1.10	1.75	±0.20	8.30	-0.80	87.06	±1.85	0.40	○
BLX31170330	17.0	+0.70~+1.10	1.75	±0.20	8.90	-0.80	92.50	±2.00	0.45	○
BLX31180330	18.0	+0.70~+1.10	2.00	±0.25	9.55	-0.80	97.98	±2.15	0.50	○
BLX31190330	19.0	+0.70~+1.10	2.00	±0.25	10.10	-0.80	103.39	±2.30	0.50	○
BLX31200330	20.0	+0.70~+1.10	2.00	±0.25	10.40	-1.00	108.83	±2.45	0.50	○

### 毛坯棒材—30°三螺旋孔 UNGROUND CARBIDE ROD WITH 3 HELICAL HOLE 30 DEGREE

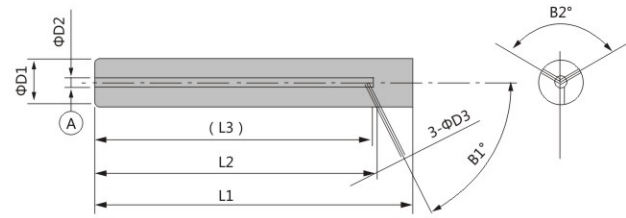


规格 Spec.	尺寸 Size								牌号 Grade	
	直径 Diameter		孔径 Hole dia		孔间距 Hole distance		螺距 Pitch		孔中心 偏离 a	GU20
	φD(mm)	Tol. (mm)	φD(mm)	Tol. (mm)	TKφ(mm)	Tol. (mm)	Pitch. (mm)	Tol. (mm)		
BLX31060330	6.0	+0.60~+1.00	0.70	±0.10	2.75	-0.40	32.70	±0.85	0.15	○
BLX31080330	8.0	+0.70~+1.10	1.00	±0.15	4.00	-0.40	43.53	±1.05	0.15	○
BLX31100330	10.0	+0.70~+1.10	1.40	±0.15	5.00	-0.60	54.41	±1.25	0.20	○
BLX31120330	12.0	+0.70~+1.10	1.40	±0.15	6.00	-0.60	65.30	±1.45	0.30	○
BLX31140330	14.0	+0.70~+1.10	1.75	±0.20	7.00	-0.80	76.18	±1.65	0.40	○
BLX31160330	16.0	+0.70~+1.10	1.75	±0.20	8.00	-0.80	87.06	±1.85	0.40	○
BLX31180330	18.0	+0.70~+1.10	2.00	±0.25	9.55	-0.80	97.95	±2.15	0.50	○
BLX31200330	20.0	+0.70~+1.10	2.00	±0.25	10.00	-1.00	108.83	±2.45	0.50	○

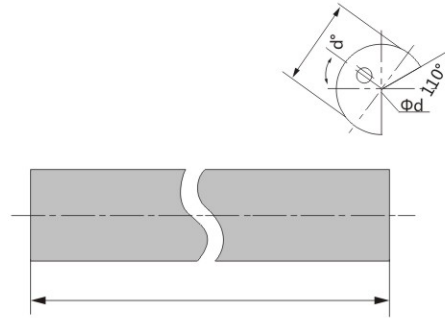


## 其他棒材 SPECIAL RODS

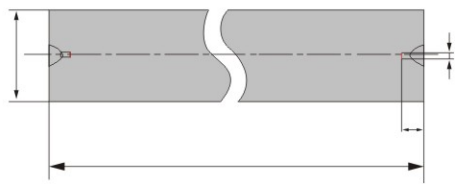
### 多斜孔管材 Rod Blank With Coolant Holes



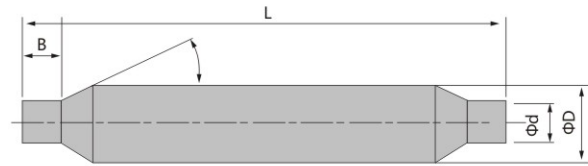
### 用于枪钻的棒材毛坯 Rod Blank For Gun Drill



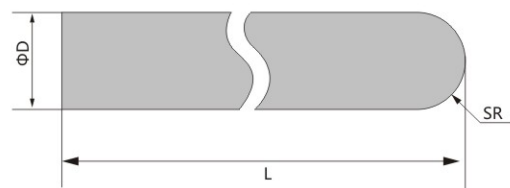
### 带中心定位孔棒材 Rod Blank With Center Holes



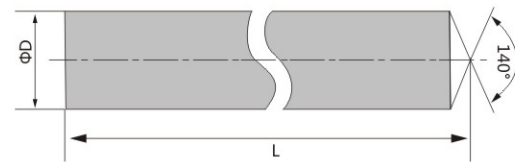
### 台阶棒 Step Drill Rod



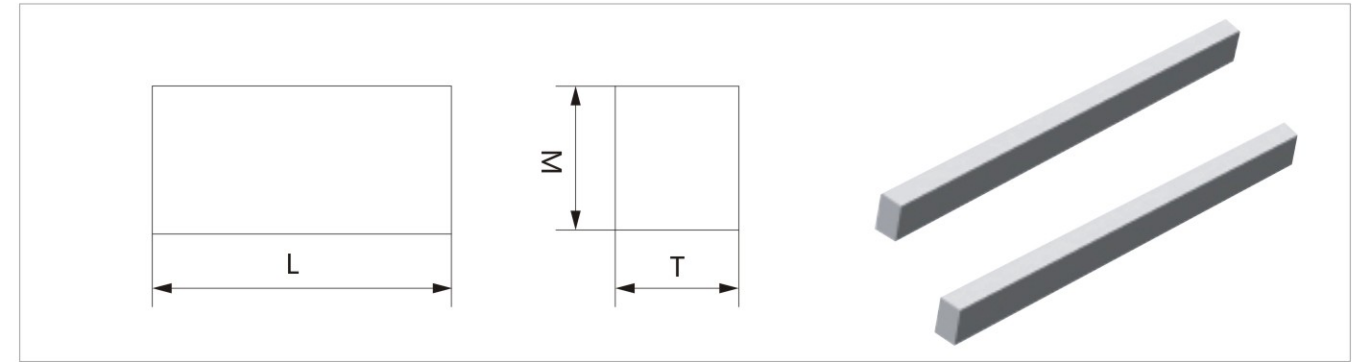
### 球头棒 Ball Nose Rod



### 尖锥棒 Boring Rod



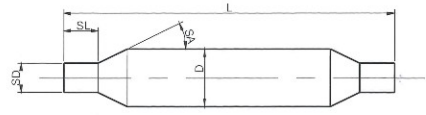
## 硬质合金片材 Carbide Plates



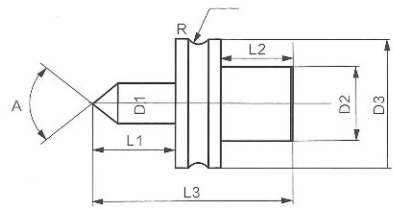
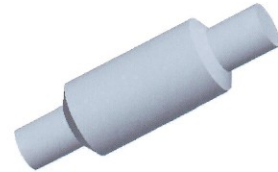
型号表示：TxWxL

型号(TxWxL) (mm) Item	厚度公差(mm) Thickness Tol.	宽度公差(mm) Width Tol.	长度公差(mm) Length Tol.
1x(2~5) xL			
1.5x(2~10) xL			
2.0x(3.5~15) xL			
2.5x(2.5~20) xL			
3.0x(3.0~20) xL	$T \leq 7.0$ T +0.5 +0.2	$W \leq 7.0$ W +0.6 +0.2	$L < 7.0$ L +1.0 0
3.5x(3.5~25) xL	$T > 7.0$ T +0.6 +0.2	$W > 7.0$ W +0.8 +0.2	$L \geq 100$ (330mm excl.)L +2.0 0
4.0x(4.0~30) xL			$L = 330$ L +0.5 0
5.0x(4.0~40) xL			
6.0x(5.0~40) xL			
(7~20)x(7~40) xL			

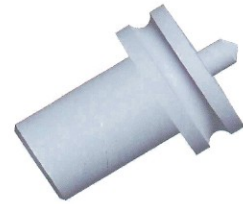
**台阶棒 Step Drill Blank**



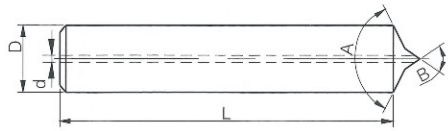
需提供图中尺寸：D、L、SD、SL、SA



需提供图中尺寸：D1、D2、D3、L1、L2、L3、A、R



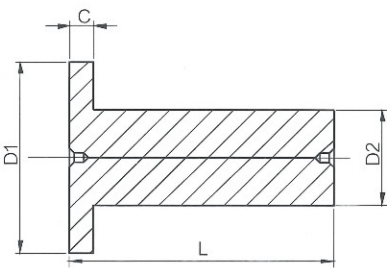
**尖锥（孔）棒 Boring (hole)rod Blank**



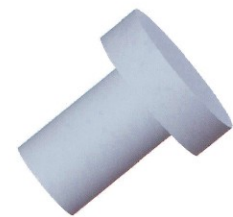
需提供图中尺寸：D、L、A、B、(d)



**T型铣刀毛坯棒 T Cutter Blank**



需提供图中尺寸：D1、D2、L、C



**公差等级 Tolerance Grade**

直径 Diameter	公差 Tolerance		
	h5	h6	h7
0-3.0mm	0.004mm	0.006mm	0.010mm
0-0.11811in	0.00015in	0.00024in	0.00039in
3.001-6.0mm	0.005mm	0.008mm	0.012mm
0.11812-0.23622in	0.00020in	0.00031in	0.00047in
6.001-10.0mm	0.006mm	0.009mm	0.015mm
0.23623-0.39370in	0.00024in	0.00035in	0.00059in
10.001-18.0mm	0.008mm	0.011mm	0.18mm
0.39371-0.70866in	0.00031in	0.00043in	0.00071in
18.001-30.0mm	0.009mm	0.013mm	0.021mm
0.90867-1.18110in	0.00035in	0.00051in	0.00083in
30.001-50.0mm	0.011mm	0.016mm	0.025mm
1.8111-1.96850in	0.00043in	0.00063in	0.00098in

**英制常规短棒 Common Rods (inch)**

规格 SPEC.	直径mm Diameter	长度mm Length
1/8*1 1/2	3.175	38.1
3/16*2	4.7625	50.8
1/4*2	6.35	50.8
1/4*2 1/2	6.35	63.5
3/8*2	9.525	50.8
1/2*4	12.7	101.6
3/4*4	19.05	101.6
1*4	25.4	101.6